

Entry / ECO

Standard / STD

Professional / PRO

ODM & OEM

Intelligent / INT

**ECO**  
Specifications



LED Cylinder

PD228 Series

**interglo**  
Lighting



## Introduction

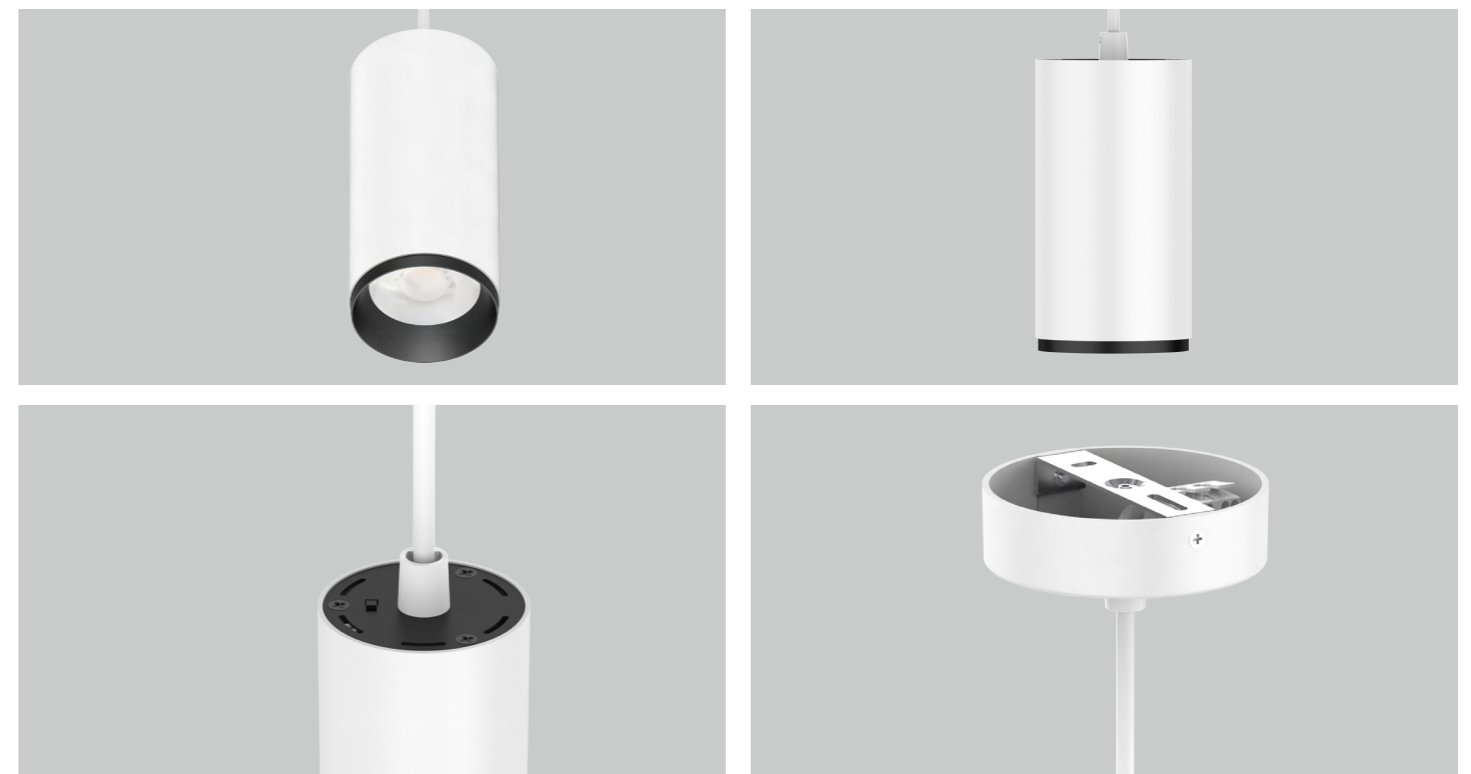
This pendant light is an anti-glare design. High lumen COB chip and PMMA lens offer a uniform lighting output. AL6063 aluminum lamp body provides excellent heat dissipation. Special lens design reaches anti-glare effect and creates a comfortable visual experience. Multiple beam angle lens optional, modular lens design make a convenient maintenance. Easy installation, recreational for various application.

## Features

- Anti-glare design.
- CRI80/90/97 available.
- Modular lens design: 24°/30°/45° for 10W and 15W, 24°/36°/60° for 20W and above.
- Flicker free internal driver.
- Dimming way: Non-dim, triac dim, DALI dim.

## Application Areas

Applicable for residential lighting in bedroom, living room, corridor etc, also suitable for commercial lighting in office, hotel, restaurant etc.





## Technical Data Sheet (Non-Dimmable)

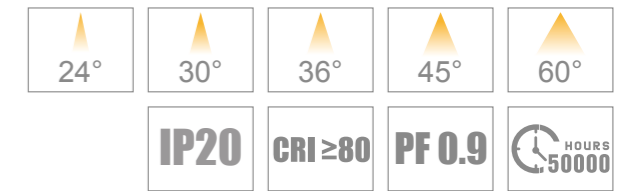
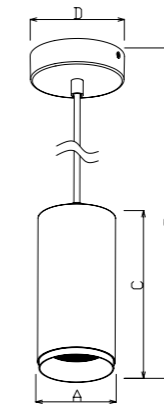
Code No.	PD228-10W	PD228-15W	PD228-20W	PD228-25W	PD228-30W	PD228-40W		
Dimension(mm)	Ø65*1265		Ø85*1285		Ø100*1320			
Cutout (mm)	-							
Watt(W)	10W	15W	20W	25W	30W	40W		
Rated Input Voltage(V)	AC230V							
Input Voltage(V)	AC200-240V							
LED Module Input	-							
Light Source	COB							
SDCM	<6							
CCT(K)	1-CCT: 2700K/3000K/4000K/5000K   3-CCT: 3000K + 3500K + 5000K							
CCT Selection DIP Switch	Yes							
Luminous Flux (lm) ±5%	Non-DIM	1-CCT	780-1100	1200-1500	1200-1500	2150-2700	2650-3050	3550-4200
			-					
	Non-DIM	3-CCT	500-850	750~1200	1600-2000	1850-2350	2100-2650	-
DIM	-							
CRI	80/90/97 (1-CCT) /90 (3-CCT)							
Beam Angle (°)	24°/30°/45°		24°/36°/60°					
UGR	-							
LED Driver	Built-in							
Dimming Option	No							
Sensor	No							
Emergency Kits	No							
Electrical Class	Class I							
Ingress Protection (IP Rating)	IP20							
Impact Resistance (IK Rating)	-							
Product Finishing(Base)	White RAL 9016/Black RAL9005							
Materials of Optics	PMMA							
Materials of Housing	PC/Aluminum							
Lifetime (hr)	5,0000h							
Glow wire test (°C)	650°C							
Operating Temp. (°C)	-20°C ~40°C							
Storage Temp. (°C)	-20°C ~65°C							
Installation	Pendant							

## Technical Data Sheet (Triac Dimmable)

Code No.	PD228-10W	PD228-15W	PD228-20W	PD228-25W	PD228-30W	
Dimension(mm)	Ø65*1265	Ø85*1285			Ø100*1320	
Cutout (mm)	-					
Watt(W)	10W	15W	20W	25W	30W	
Rated Input Voltage(V)	AC230V					
Input Voltage(V)	AC200-240V					
LED Module Input	-					
Light Source	COB					
SDCM	<6					
CCT(K)	1-CCT: 2700K/3000K/4000K/5000K   3-CCT: 3000K + 3500K + 5000K					
CCT Selection DIP Switch	Yes					
Luminous Flux (lm) ±5%	Non-DIM	1-CCT	-			
	Triac DIM		750-1050	1100-1400	1750-2150	2000-2600
	Non-DIM	3-CCT	-			
DIM	500-800		700-1100	1500-1900	1750-2200	2000-2450
CRI	80/90/97 (1-CCT) /90 (3-CCT)					
Beam Angle (°)	24°/30°/45°		24°/36°/60°			
UGR	-					
LED Driver	Built-in					
Dimming Option	Triac					
Sensor	No					
Emergency Kits	No					
Electrical Class	Class I					
Ingress Protection (IP Rating)	IP20					
Impact Resistance (IK Rating)	-					
Product Finishing(Base)	White RAL 9016/Black RAL9005					
Materials of Optics	PMMA					
Materials of Housing	PC/Aluminum					
Lifetime (hr)	5,0000h					
Glow wire test (°C)	650°C					
Operating Temp. (°C)	-20°C ~40°C					
Storage Temp. (°C)	-20°C ~65°C					
Installation	Pendant					

# Technical Data Sheet (DALI Dimmable)

Code No.	PD228-10W	PD228-15W	PD228-20W	PD228-25W	PD228-30W	
Dimension(mm)	Ø65*1265		Ø85*1285	Ø100*1320		
Cutout (mm)	-					
Watt(W)	10W	15W	20W	25W	30W	
Rated Input Voltage(V)	AC230V					
Input Voltage(V)	AC200-240V					
LED Module Input	-					
Light Source	COB					
SDCM	<6					
CCT(K)	1-CCT: 2700K/3000K/4000K/5000K					
CCT Selection DIP Switch	NO					
Luminous Flux (lm) ±5%	Non-DIM	1-CCT	-			
	Triac DIM		700-1150	1100-1650	1850-2400	2200-2750
	Non-DIM	3-CCT	-			
	DIM		-			
CRI	80(90/97 optional)					
Beam Angle (°)	24°/30°/45°		24°/36°/60°			
UGR	-					
LED Driver	Built-in					
Dimming Option	DALI					
Sensor	No					
Emergency Kits	No					
Electrical Class	Class I					
Ingress Protection (IP Rating)	IP20					
Impact Resistance (IK Rating)	-					
Product Finishing(Base)	White RAL 9016/Black RAL9005					
Materials of Optics	PMMA					
Materials of Housing	PC/Aluminum					
Lifetime (hr)	5,0000h					
Glow wire test (°C)	650°C					
Operating Temp. (°C)	-20°C ~40°C					
Storage Temp. (°C)	-20°C ~65°C					
Installation	Pendant					



## Measurement

Code	Dimension(mm)				Size(mm)	Product Weight (Kg)		Package weight (Kg)		Carton Size(cm)	Qty/CTN	20GP (pcs)	40HQ (pcs)
	A	B	C	D		N.W/PC	G.W/PC	N.W/CTN	G.W/CTN				
PD228-10W	Ø65	1265	157	Ø104.5	Ø65*1265	0.55	0.65	6.6	8.6	50.5*27.0*38.5	12	6840	15768
PD228-15W	Ø65	1265	157	Ø104.5	Ø65*1265	0.55	0.65	6.6	8.6	50.5*27.0*38.5	12	6840	15768
PD228-15W	Ø85	1285	178	Ø104.5	Ø85*1285	0.8	0.9	9.6	11.6	56.5*29.0*42.5	12	4800	11880
PD228-20W	Ø85	1285	178	Ø104.5	Ø85*1285	0.8	0.9	9.6	11.6	56.5*29.0*42.5	12	4800	11880
PD228-25W	Ø85	1285	178	Ø104.5	Ø85*1285	0.8	0.9	9.6	11.6	56.5*29.0*42.5	12	4800	11880
PD228-30W	Ø100	1320	211	Ø104.5	Ø100*1320	1.15	1.25	14	15.8	56.5*35.0*42.5	12	4020	9792
PD228-40W	Ø100	1320	211	Ø104.5	Ø100*1320	1.25	1.35	15	17	56.5*35.0*42.5	12	4020	9792
PD228-10W-DA	Ø65	1265	157	Ø104.5	Ø65*1265	0.57	0.67	6.8	8.8	50.5*27.0*38.5	12	6840	15768
PD228-15W-DA	Ø65	1265	157	Ø104.5	Ø65*1265	0.57	0.67	6.8	8.8	50.5*27.0*38.5	12	6840	15768
PD228-20W-DA	Ø85	1285	178	Ø104.5	Ø85*1285	0.84	0.94	10.1	12.1	56.5*29.0*42.5	12	4800	11880
PD228-25W-DA	Ø100	1320	211	Ø104.5	Ø100*1320	1.25	1.35	15	17	56.5*35.0*42.5	12	4020	9792
PD228-30W-DA	Ø100	1320	211	Ø104.5	Ø100*1320	1.25	1.35	15	17	56.5*35.0*42.5	12	4020	9792

## Driver Datasheet (Non-Dimmable)

Total load wattage		10W	15W	20W	25W	30W	40W
Output	Output Voltage range	DC30-40V					
	Rated output current	230mA	350mA	500mA	600mA	750mA	950mA
	Line Regulation	±5%					
	Setup, Rise Time	≤0.5S					
	Flickering Index	≤10%					
Input	Input Voltage	AC180-265V					
	Rated Input Voltage(V)	AC200-240V					
	Frequency	50/60Hz					
	Input Current	≤0.06A	≤0.08A	0.12A	0.15A	0.18A	0.25A
	Rated Input Current	≤0.05A	≤0.07A	0.11A	0.14A	0.17A	0.23A
	Power Factor	0.9					
	THD	<20% @230V					
	Efficiency	≥82%	≥85%	≥87%	≥87%	≥87%	≥87%
	No load wattage	<0.5W					
Protection	Short circuit protection	Pass					
	Over voltage protection	Pass					
	Over temperature protection	Pass					
Safety & EMC	Withstand voltage	I/P-O/P:3.75KVac, <5mA 60S					
	Isolation Resistance	500VDC, ≥2M Ω					
	Surge	IEC/EN61000-4-5 (P<25W; L-N:500V)			IEC/EN61000-4-5 (P≥25w L-N:1KV)		
	EMC Emission	EN55015, EN61000-3-2					
EMC Immunity	EN61000-4-2,3,4,5,6,8,11; EN61547						

## Driver Datasheet (Triac Dimmable)

Total load wattage		10W	15W	20W	25W	30W
Output	Output Voltage range	DC30-40V				
	Rated output current	220mA	350mA	480mA	580mA	700mA
	Line Regulation	±5%				
	Setup, Rise Time	≤0.5S				
	Flickering Index	≤10%				
Input	Input Voltage	AC200-240V				
	Rated Input Voltage(V)	AC230V				
	Frequency	50/60Hz				
	Input Current	≤0.06A	≤0.09A	0.12A	0.14A	0.17A
	Rated Input Current	≤0.05A	≤0.08A	0.11A	0.12A	0.15A
	Power Factor	0.9				
	THD	-	-	-	<20% @230V	<20% @230V
	Efficiency	≥78%	≥83%	≥84%	≥84%	≥85%
	No load wattage	<0.5W				
	Protection	Short circuit protection	Pass			
Over voltage protection		Pass				
Over temperature protection		Pass				
Safety & EMC	Withstand voltage	I/P-O/P:3.75KVac, <5mA 60S				
	Isolation Resistance	500VDC, ≥2M Ω				
	Surge	IEC/EN61000-4-5( P<25W; L-N:500V)			IEC/EN61000-4-5 (P≥25w L-N:1KV)	
	EMC Emission	EN55015, EN61000-3-2				
EMC Immunity	EN61000-4-2,3,4,5,6,8,11; EN61547					

## Driver Datasheet (DALI Dimmable)

Total load wattage		10W	15W	20W	25W	30W
Output	Output Voltage range	DC30-40V				
	Rated output current	230mA	350mA	500mA	600mA	700mA
	Line Regulation	±5%				
	Setup, Rise Time	<1s @230V				
	Flickering Index	1%(NO RISK)				
Input	Input Voltage	AC180-264V				
	Rated Input Voltage(V)	AC200-240V				
	Frequency	50/60Hz				
	Input Current	≤0.07A	0.1A	0.13A	0.16A	0.19A
	Rated Input Current	≤0.06A	0.09A	0.12A	0.14A	0.17A
	Power Factor	0.9				
	THD	<20% @230V				
	Efficiency	≥83%	≥84%	≥85%	≥85%	≥85%
	No load wattage	<0.5w @230V				
	Protection	Short circuit protection	Pass			
Over voltage protection		Pass				
Over temperature protection		Pass				
Safety & EMC	Withstand voltage	I/P-O/P:3.75KVac, <5mA 60S				
	Isolation Resistance	500VDC, ≥2M Ω				
	Surge	IEC/EN61000-4-5( P<25W; L-N:500V)			IEC/EN61000-4-5 (P≥25w L-N:1KV)	
	EMC Emission	EN55015, EN61000-3-2				
EMC Immunity	EN61000-4-2,3,4,5,6,8,11; EN61547					

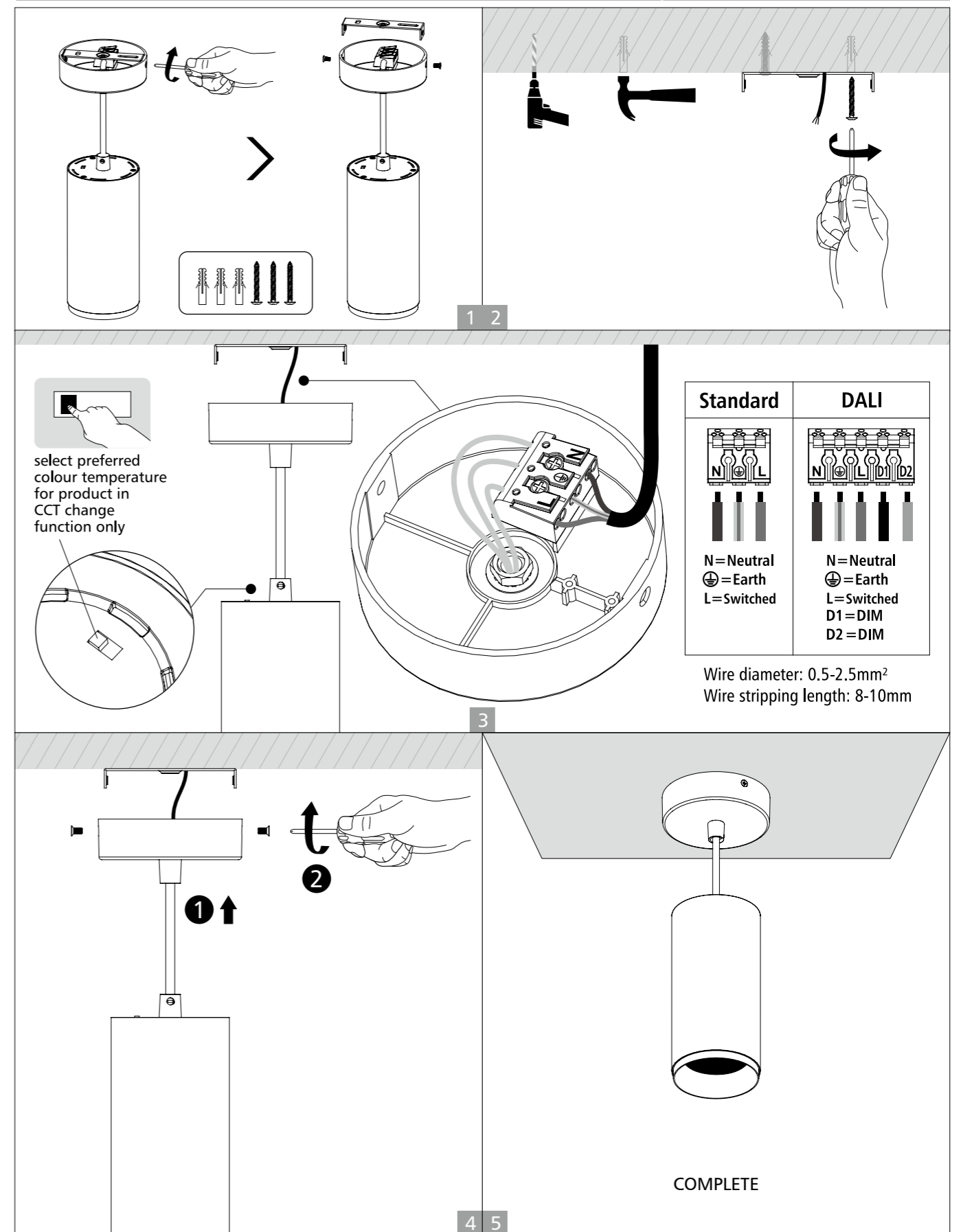
### Installation Procedure

#### WARNING

1. Switch off before installation.
2. Switch on only after complete installation and examination of the circuit.
3. Professional electrician for installation and maintenance only.



### Suspended installation (With round ceiling plate)



**ECO**  
Specifications

**STD**  
Specifications

**PRO**  
Specifications

**ODM**  
Specifications

  
**INT**  
Intelligent

  
**interglo**  
Lighting

[www.interglo.com.au](http://www.interglo.com.au) [sales@interglo.com.au](mailto:sales@interglo.com.au) TEL: 03 9518 5112